

# Key Insights from the “State of the Poultry Sector” Sector Brief

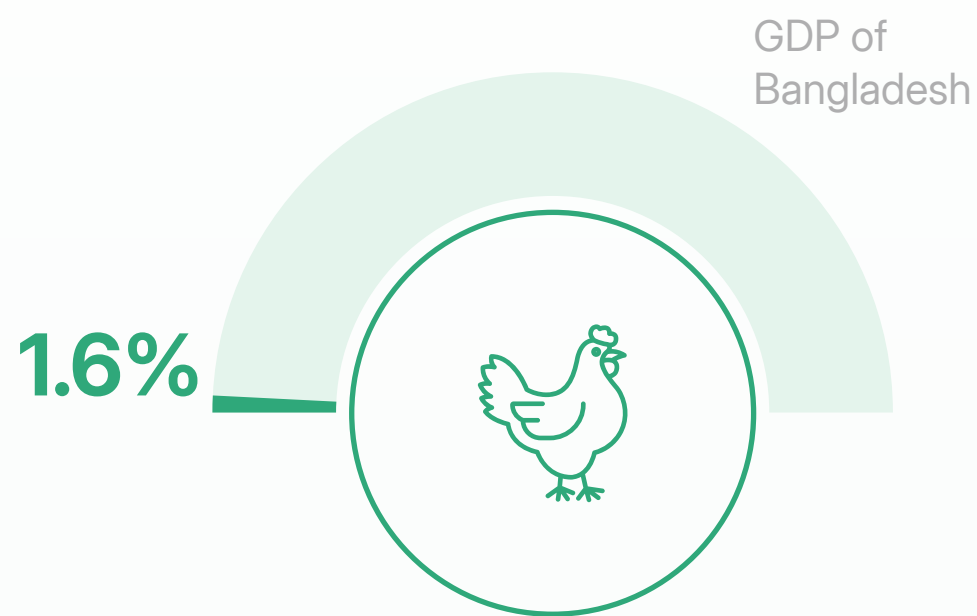
A Strategic Roadmap Towards Sustainable  
Sectoral Growth



Swipe for  
More



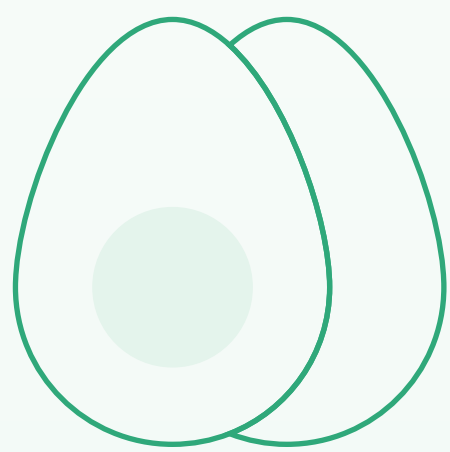
# Sector at a Glance



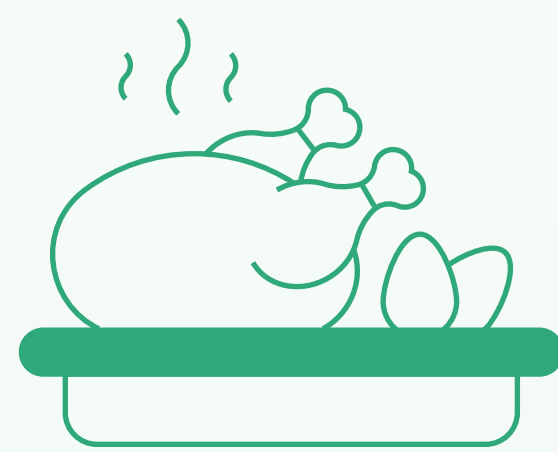
The poultry industry contributes **~1.6% of Bangladesh's GDP**



Current poultry meat production: **8.7M metric tons/year**



Egg Production: **23.3B Units (FY 2022-23).**

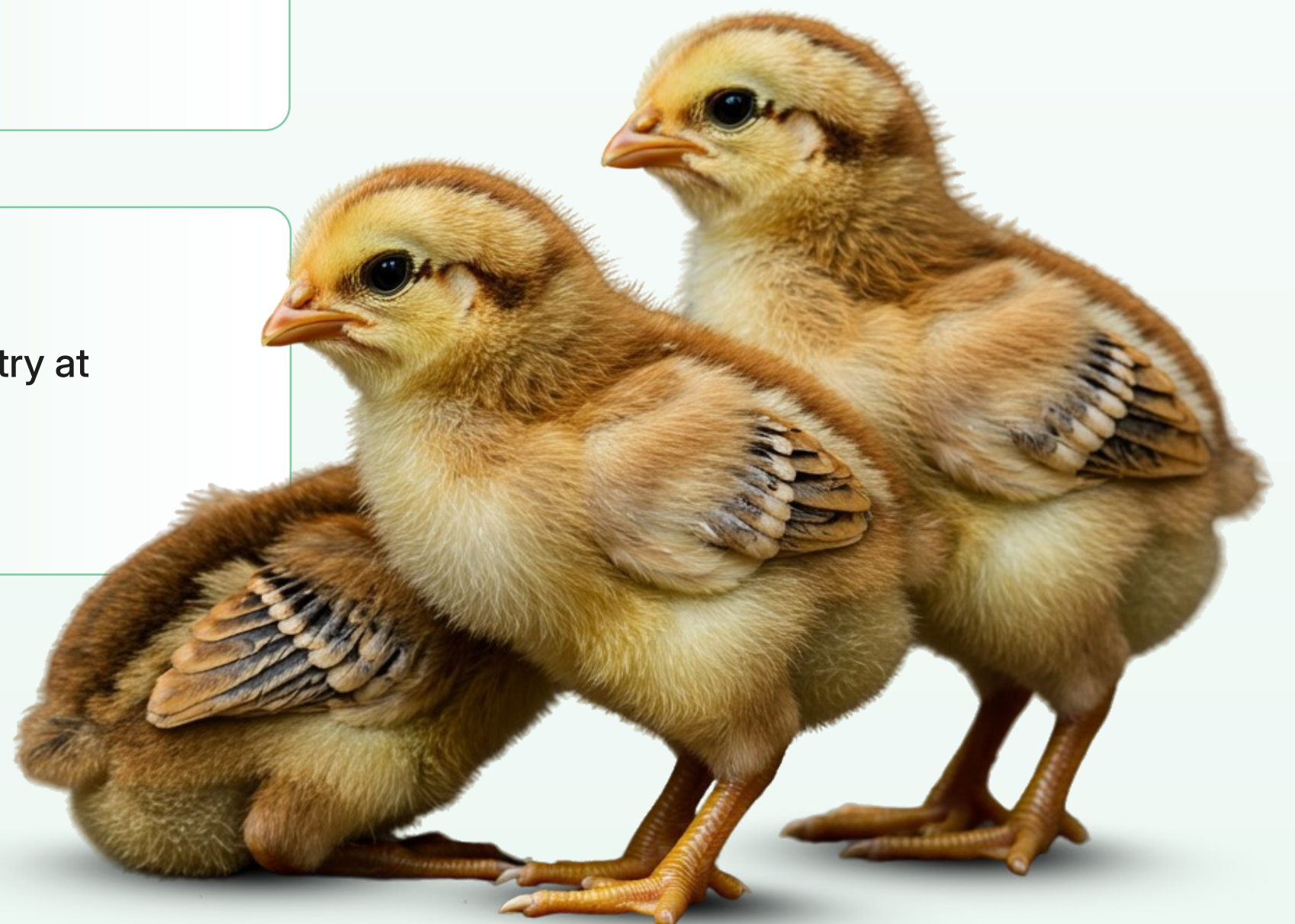
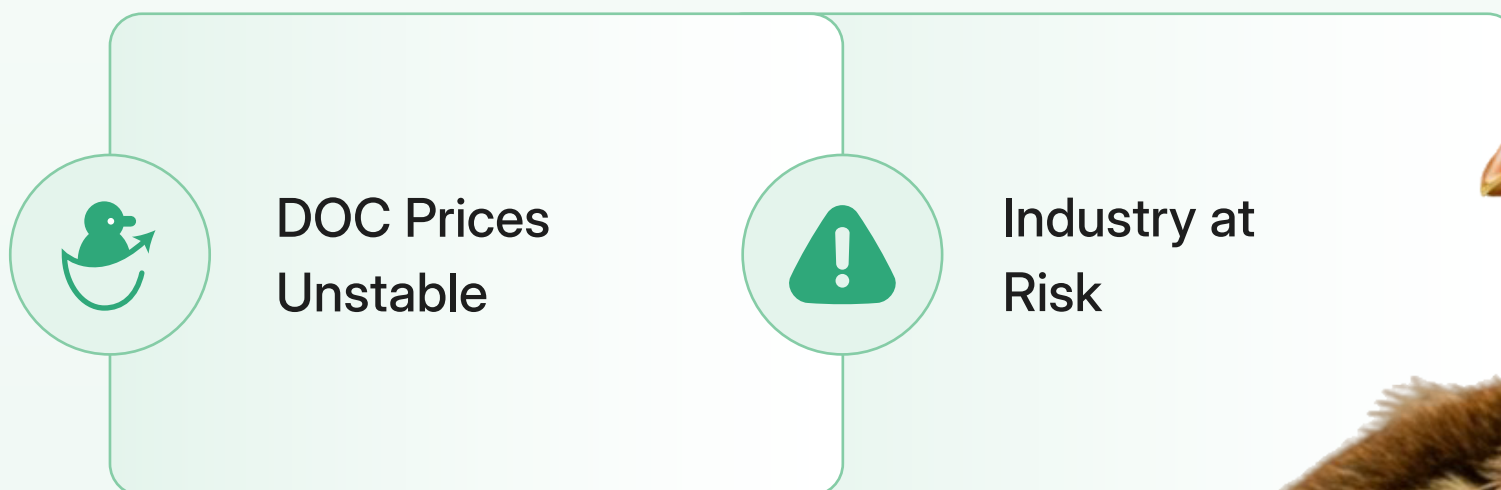
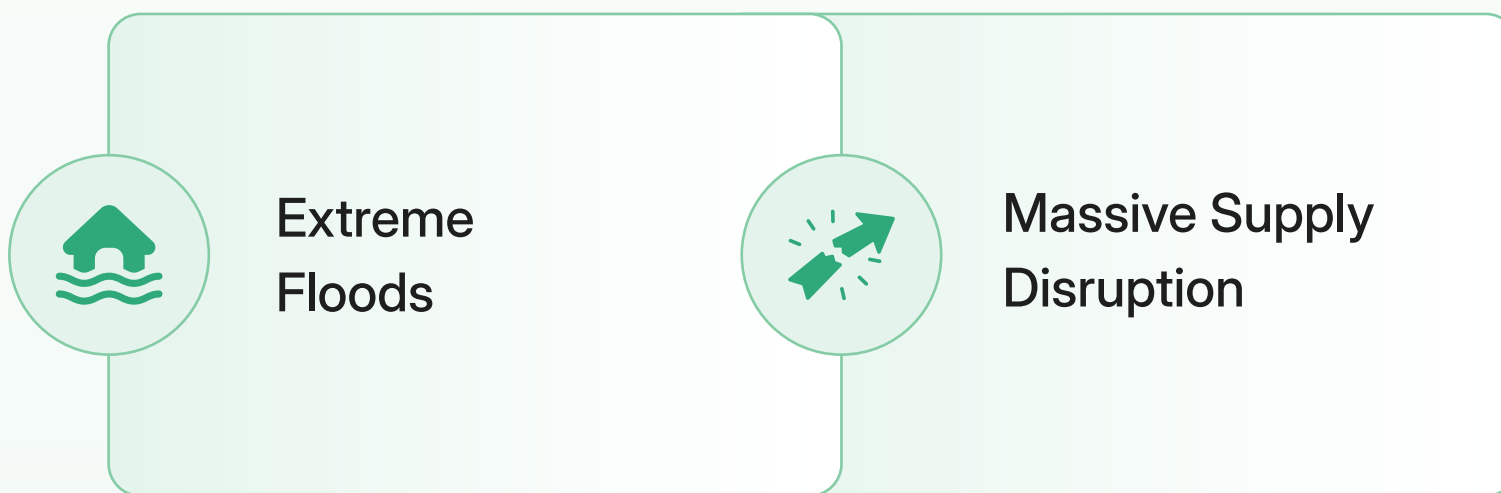
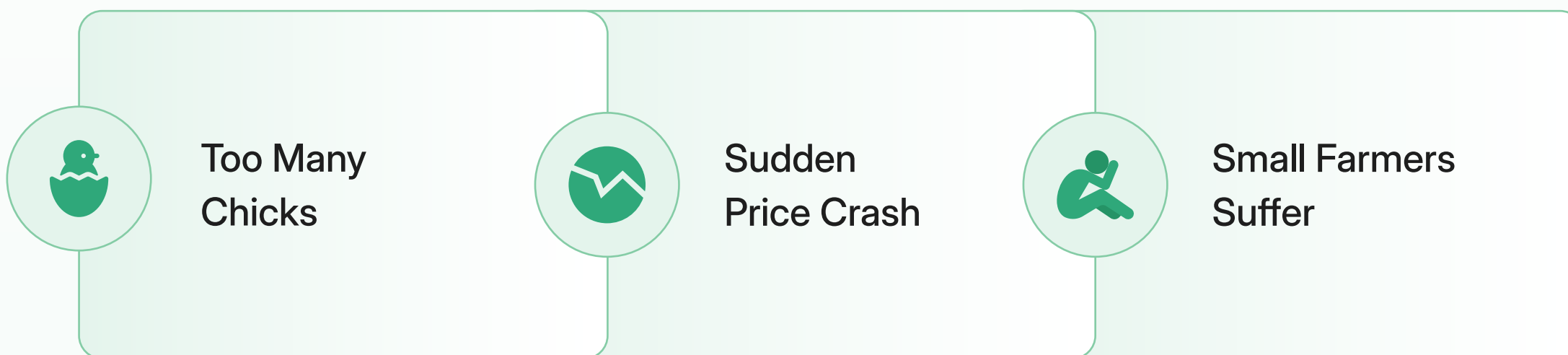
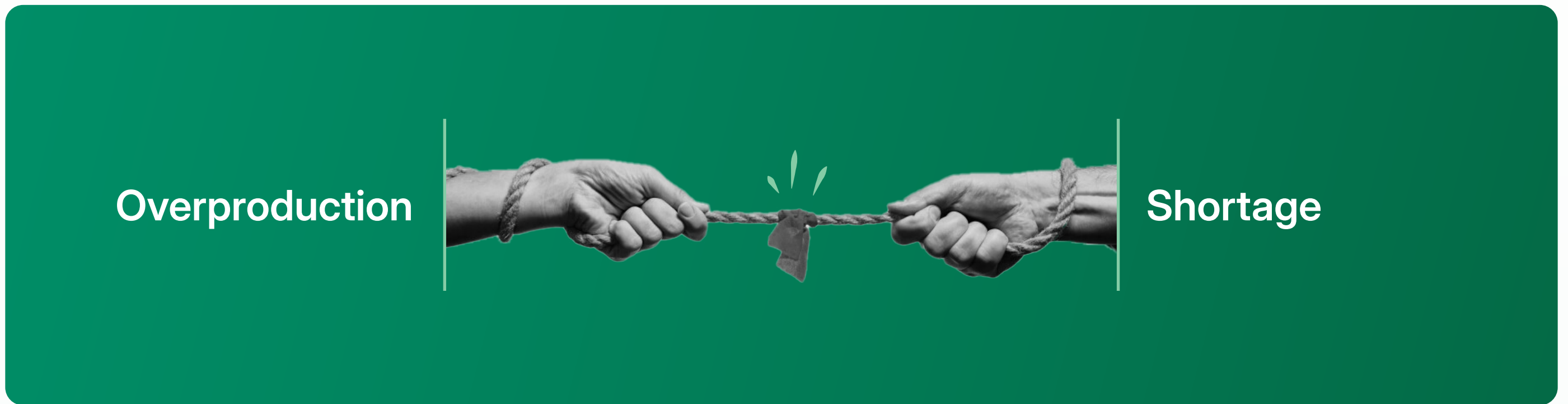


Projected demand: **Expected to double by 2050.**

# Key Challenges



# Supply-Demand Chaos



# Policy Reflections: Government Vs. Industry

## Government Priorities:



Tax Relief



Local Feed Production



Cold Storage & Export Support



Fair Contract Farming

## Industry Priorities:



Smart Production



Biosecurity



Renewable Energy



Processed Poultry Branding

 Swipe for More



# Roadmap for a Resilient Poultry Industry



**Next Step:** Policy reforms, industry innovation, global partnerships.



Swipe for More

# Join the Poultry Transformation Movement!

Download the Strategy Paper Now

[www.lightcastlepartners.com](http://www.lightcastlepartners.com)

